



einfach.schnell.sicher

Pfanzelt Hebetchnik GmbH

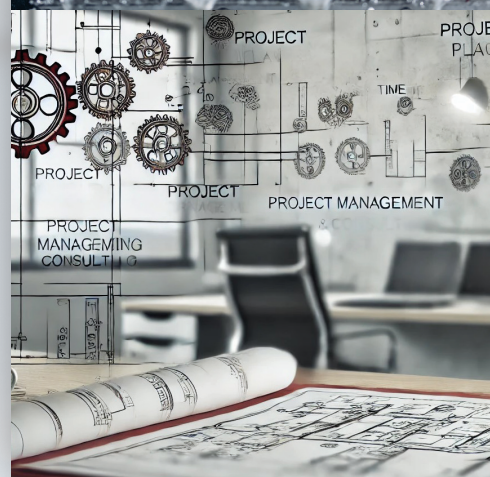
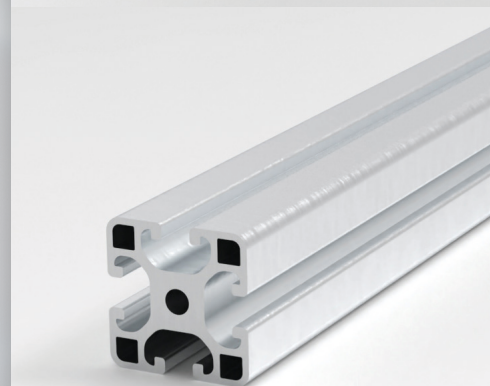
Gewerbepark 25
Germany | 87675 Rettenbach a. A.

+49 8860 9221470
+49 160 96486661

info@pfanzelt-hebetechnik.de
www.pfanzelt-hebetechnik.de



**PFANZELT
HEBETECHNIK**
einfach.schnell.sicher



**INNOVATION AND ENGINEERING ALIGNED:
TAILORED SOLUTIONS FOR ANY CHALLENGE.**

Pfanzelt Hebetchnik GmbH · Gewerbepark 25 · Germany | 87675 Rettenbach a. A. · +49 8860 9221470 · info@pfanzelt-hebetechnik.de · pfanzelt-hebetechnik.de

ENGINEERING EXCELLENCE FOR YOUR CHALLENGES

We, Pfanzelt Hebetchnik GmbH, are a young and innovative mechanical engineering company based in Southern Germany.

With our extensive industry experience, we offer tailor-made solutions – from the initial idea to successful implementation.

Our range of services includes lifting technology featuring the pioneering ClickScrew® technology, customized system profile solutions and state-of-the-art special-purpose machinery engineering.

Additionally, you benefit from professional project management and personalized, in-depth consulting services perfectly tailored to your requirements.

LIFTING TECHNOLOGY

Click, Don't Screw – technically unique features and benefits with ClickScrew®.



ALUMINUM SYSTEM PROFILES

Versatile and modular solutions for industrial applications.



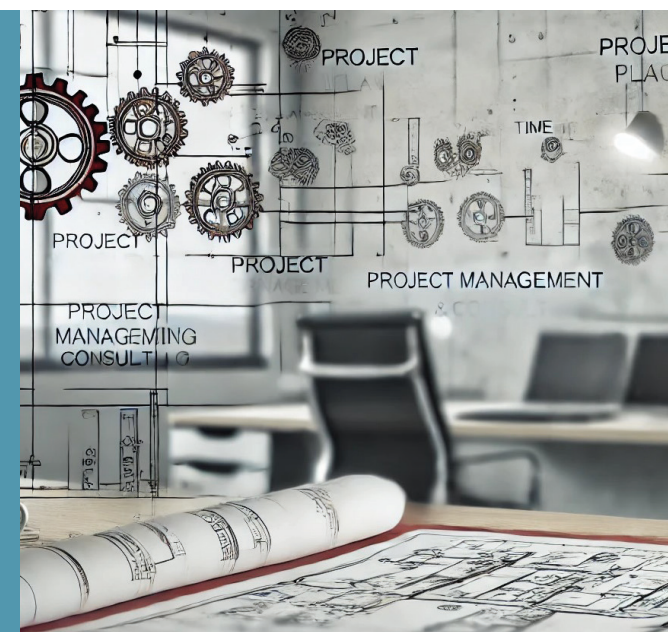
CUSTOM MACHINERY ENGINEERING

Tailored devices and systems designed to meet your specific requirements.



PROJECT MANAGEMENT & CONSULTING

Efficient planning, execution, and consulting for your projects.



CLICK, DON'T SCREW

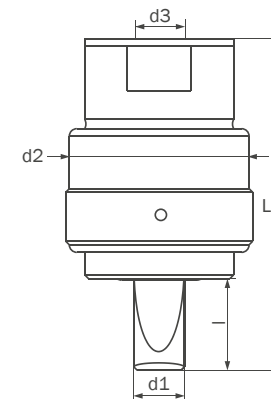
Thanks to the innovative ClickScrew® technology, traditional eyebolts, time-consuming lifting processes, and costly lifting equipment are now a thing of the past.

With our products, you can work simply, quickly, and safely. Optimize your workflows, reduce production costs, and achieve even greater efficiency in the future.

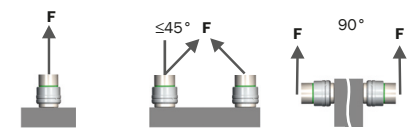
Calculate your savings potential online now and discover the benefits for your specific application.

Replace your outdated eyebolts today with the innovative ClickScrew®!

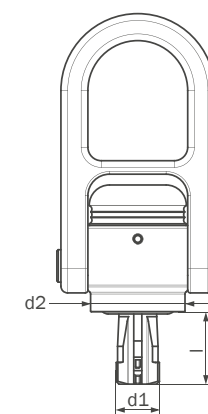
CLICKSCREW 1.0



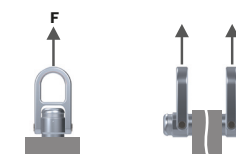
type	thread d1 (mm)	l (mm)	L (mm)	d2 (mm)	d3 (mm)	kg vertical per	total kg at max. 45°	total kg at max. 90°
ML8	M8x1,25	18	82	50	M8	140	30	25
ML10	M10x1,5	18	82	50	M10	230	50	40
ML12	M12x1,75	18	82	50	M12	340	90	70
ML16	M16x2	25	89	50	M16	700	165	130
ML20	M20x2,5	25	112	61	M20	1200	260	210
ML24	M24x3	35	122	61	M24	1800	345	275
ML30	M30x3,5	35	122	61	M30	3200	580	460



CLICKSCREW 2.0



type	thread d1 (mm)	l (mm)	d2 (mm)	kg vertical per	total kg at max. 90°
M6	M6x1	13	25	50	50
M8	M8x1,25	13	25	140	140
M10	M10x1,5	17	25	230	230
M12	M12x1,75	21	35	340	340
M16	M16x2	27	35	700	700
M20	M20x2,5	30	50	1200	1200
M24	M24x3	36	50	1800	1800
M30	M30x3,5	45	65	3200	3200



NEED A CUSTOMIZED SOLUTION?

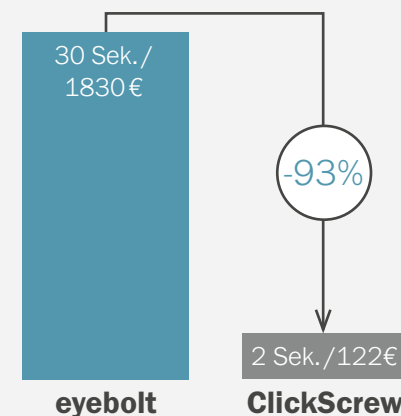
Use the configurator at pfanzelt-hebetechnik.de to submit custom requests for various sizes, threads, and load capacities!



YOUR BENEFITS

- **Optimal Handling** – Simple and safe operation.
- **Fast** – Average operation time of just 2 seconds.
- **Safe** – Superior accident prevention compared to screw-in tools.
- **CE-Compliance** – Conforms to the Machinery Directive.
- **Flexibility** – Compatible with existing threads.
- **Gentle** – Prevents thread damage.
- **Standards** – Dimensions correspond to eyebolts.
- **Low Maintenance** – Requires minimal upkeep.
- **Versatile** – CS 1.0 is compatible with various lifting accessories.
- **Direct Connection** – CS 2.0 connects directly to the crane.

SAVINGS



Calculation based on 20 parts per day and an hourly rate of €50 over one year.

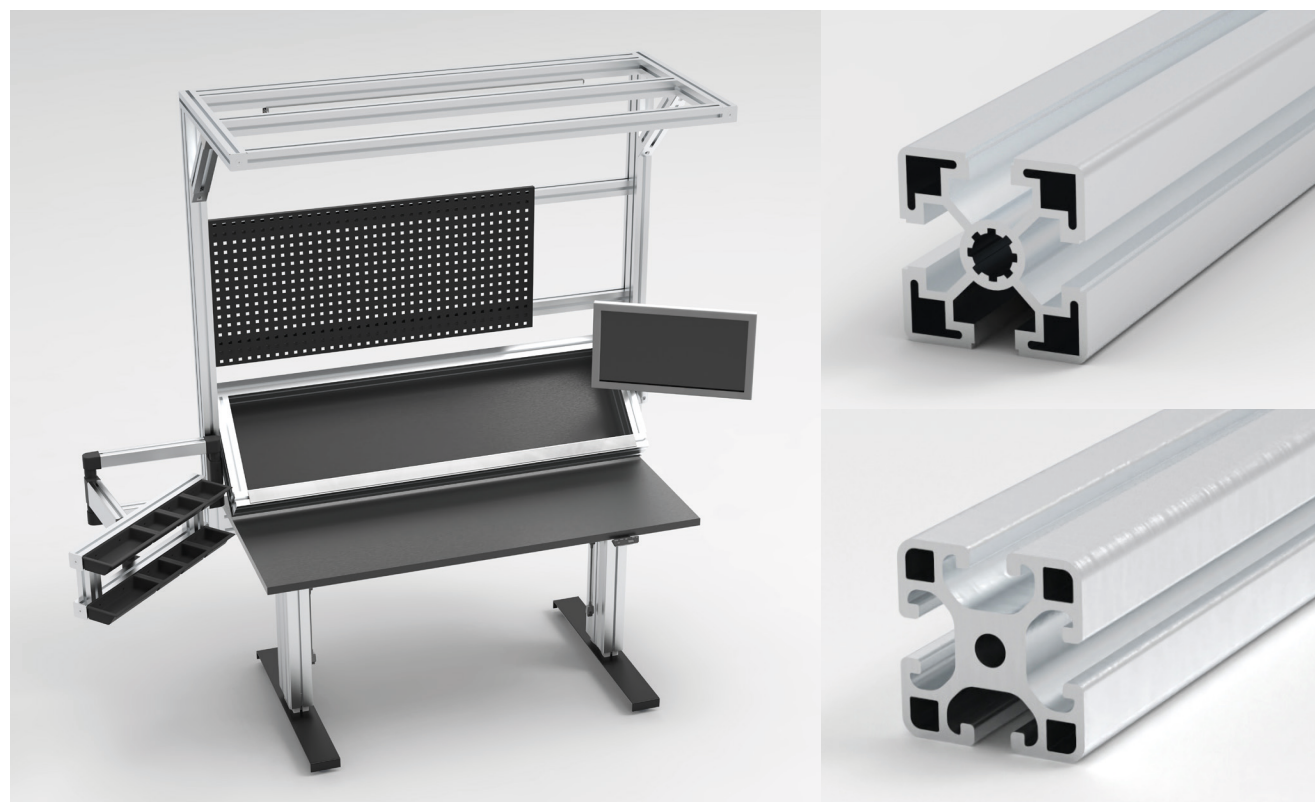
Savings of approx. 28 seconds, or €1708 per ClickScrew.

ALUMINUM SYSTEM PROFILES

Our system profiles feature a modular design, exceptional versatility, and high strength. They are ideal for a wide range of industrial applications, enabling customized solutions tailored to diverse requirements.

Our experts develop precise systems designed to meet your exact needs.

Benefit from our flexibility, comprehensive service, and solution-oriented approach. Through personalized consultation and careful planning, we deliver the optimal solution for your application.



FIELDS OF APPLICATION

Workcells and Workbenches

Ergonomic & flexible solutions for efficient production- and assembly stations.

Assembly and Production Fixtures

Precise designs for seamless assembly and manufacturing workflows.

Shelving Systems and Storage Solutions

Modular shelving systems for efficient storage and organization.

Machine Frames and Equipment Structures

Adaptable, robust frames for durable machine and system designs.

Transport and Conveyor Systems

Lightweight yet durable solutions for efficient material handling across all areas.

Test Set-ups and Testing Facilities

Modular systems for precise, repeatable testing and research applications.

Trade Fair and Exhibition Stands

Stylish, functional constructions for professional presentations and trade shows.

Automation Technology and Robotic Cells

Sturdy systems for seamless integration of automation and robotics.

Protective and Covering Devices

Reliable protective and covering equipment for safe working environments.



YOUR BENEFITS

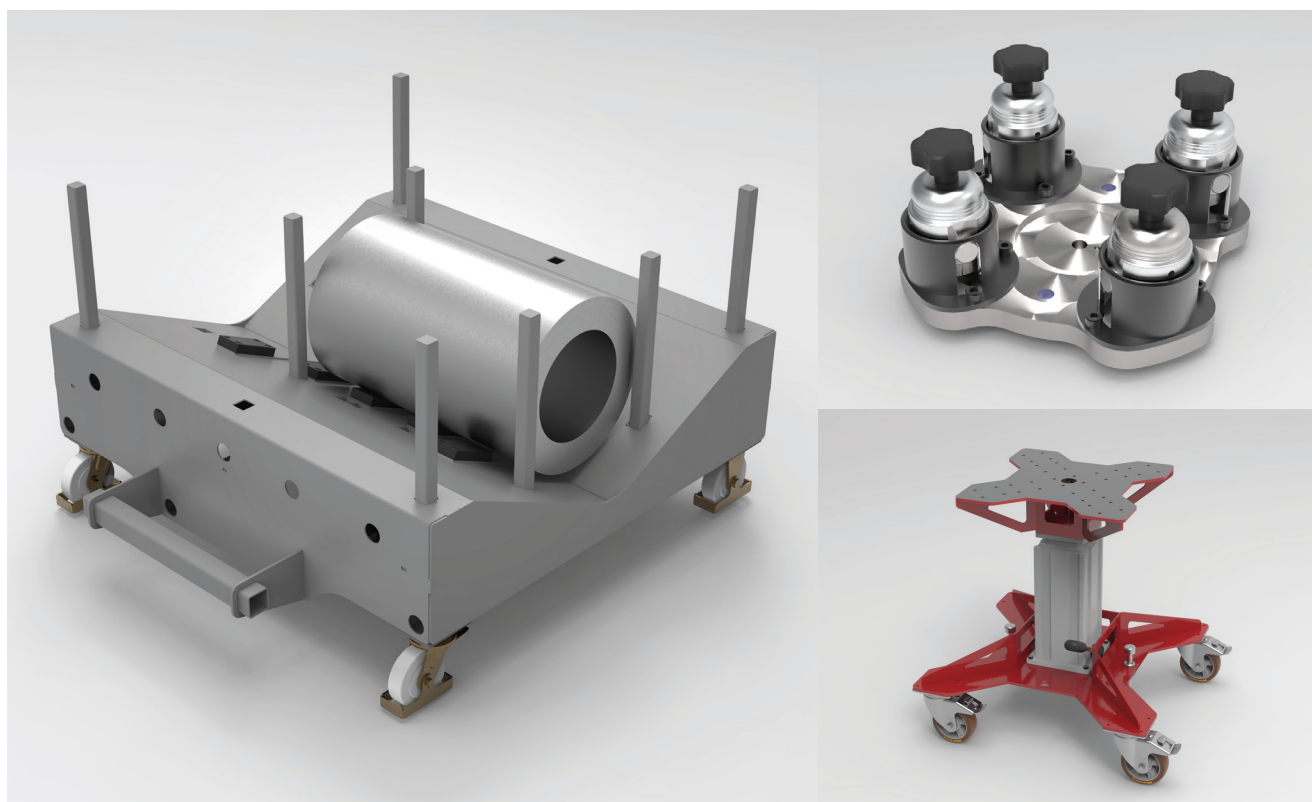
- **Ready to Use** – We design, assemble, and deliver fully operational fixtures directly to you.
- **Excellent appearance** – Our system profiles stand out with a modern and clean design.
- **Modularity** – Our fixtures can be easily expanded and adapted.
- **Efficient Processes** – Streamlined workflows ensure short processing and delivery times.
- **Lightweight** – Our fixtures provide optimal stability with minimal weight.
- **Versatility** – Suitable for a wide range of applications due to high adaptability.
- **Reusability** – Components can be reused or modified as needed.

CUSTOM MACHINERY ENGINEERING

We specialize in the design and production of tailored solutions in device construction, tooling, and special-purpose machine building. For this, we rely on our state-of-the-art machinery in our in-house production facilities.

From the initial concept to realization, we provide comprehensive support and maximum flexibility.

Rely on our expertise, creative approaches and craftsmanship – together, we'll bring your project to success.



SCOPE OF SERVICES

Design and Development

Precise engineering for maximum functionality and efficiency.

Prototype Construction

Functional initial models for targeted testing and adjustments.

Assembly Services

Comprehensive support for all industrial requirements.

Toolmaking

Custom-fit tools for demanding applications.

Fixture Construction

Specialized solutions tailored to your requirements.

Plant Engineering

Planning and building complete systems customized to your needs.

Automation Technology

Innovative solutions for process automation.

Metalwork / Steelwork

Durable constructions for maximum stability.

Repairs & Inspections

Professional maintenance for maximum operational efficiency.

With our core capabilities in **turning, milling, welding, grinding, sawing, drilling, and bending**, we also offer comprehensive contract **manufacturing** – complemented by **3D-printing, laser engraving, surface technology, and heat treatment**.



YOUR BENEFITS

- **Comprehensive Support** – We guide you from the initial idea to the finished product.
- **Concept Development** – Our design department quickly delivers initial concepts and ideas.
- **Tailored Solutions** – Concepts are precisely adapted and optimized to meet your requirements.
- **High Flexibility** – We respond quickly and flexibly to your needs and changes.
- **Extensive Quality Control** – Regular quality checks ensure the highest standards.
- **Efficient Processes** – Streamlined workflows guarantee short processing and delivery times.

PROJECT MANAGEMENT

Our project management and consulting services support industrial companies in executing projects smoothly and efficiently.

As an experienced partner, we guide you from the initial idea to final implementation – structured, professional, and on schedule.

Whether it's full project management, partial project planning, or specialized consulting, we provide the right support, allowing you to focus entirely on your core business.

With our extensive experience and deep industry expertise, we ensure your projects are completed successfully.



SCOPE OF SERVICES

Project Schedules

Structured high-level and detailed schedules for smooth workflows.

Workshops

Planning, facilitation, and follow-up of project-specific workshops.

Project Control

Measures to ensure quality, deadlines, and cost adherence.

Project Reporting

Regular status reports to support decision-making.

Production Planning

Optimization of production processes for greater efficiency.

Action & Budget Plans

Resource and budget planning as well as monitoring.

Cost-Benefit Analyses

Assessment of economic viability and profitability.

Commissioning & Final Acceptance

Support from installation to final approval.

Project Review

Analysis of project experiences for continuous improvement.



YOUR BENEFITS

- **All-in-One Solution Provider** – We support you from planning to commissioning.
- **Scalable Solutions** – Flexible methods tailored to businesses and projects of any size.
- **Extensive Network** – Access to a strong partner network for additional resources.
- **Continuous Support** – Ongoing assistance even after project completion to ensure success.
- **Proactive Problem Solving** – Rapid identification and resolution of potential challenges.
- **Interdisciplinary Expertise** – Holistic support through cross-functional knowledge.